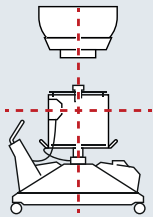


# BEAMSCAN® Setup

Ready in Minutes

## 1. Install.

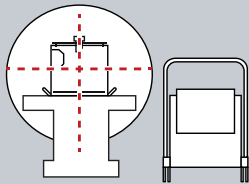
### BEAMSCAN® Speedo



Move the all-in-one BEAMSCAN Speedo under the gantry. Roughly align it to the linac using the in-room lasers, and plug in the power cable.

## 2. Start auto setup.

### BEAMSCAN® Ringo

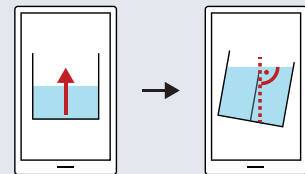


Position BEAMSCAN Ringo near the left or right side of the couch. Raise the couch to the same height and slide the phantom onto it. Place the control units at the far end of the couch, then connect the water hose and cables. Align the phantom to the linac using the in-room lasers.

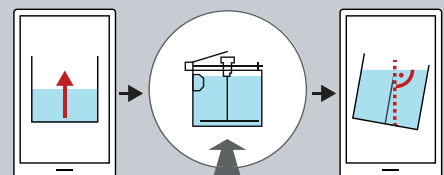


Access the BEAMSCAN Wizard from your smart device and start the auto setup with "Reference Run."

## 3. Fill and level.

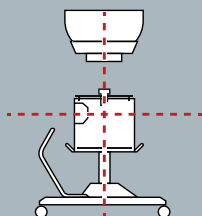


Continue with automatic water filling and phantom leveling.

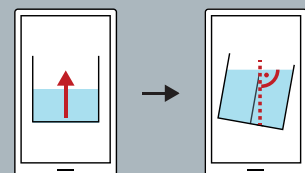


Continue with automatic water filling. Adjust the height of the couch and move the phantom into the gantry. Run the auto leveling function.

### BEAMSCAN® Mobilo

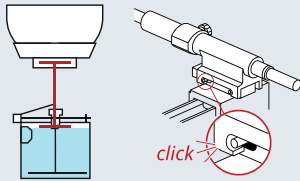


Move the lift with the phantom under the gantry and align it with the linac using the in-room lasers. Position the reservoir on the left (or right) side of the couch. Place the control units at the far end of the couch, then connect the water hose and cables.



Continue with automatic water filling and phantom leveling.

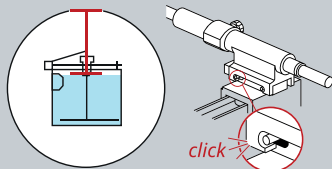
#### 4. Set SSD and mount field detector.



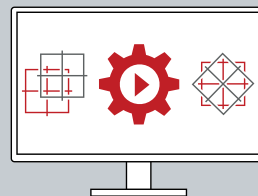
Set the SSD using the click-fix SSD adjustment tool and clip in the TRUFIX holder with your field detector.

#### 5. Complete auto setup in control room.

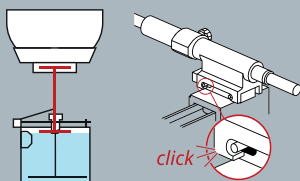
Ready to scan for every user



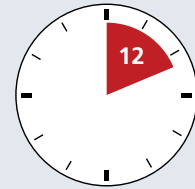
Check the SSD with imaging using the click-fix positioning tool. Clip in the TRUFIX holder with your field detector.



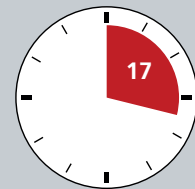
Start the "Auto Setup" in the BEAMSCAN software. Turn on the linac and complete the two remaining steps of the auto setup: CAX and rotational correction.



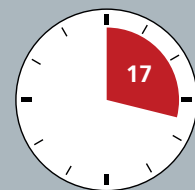
Set the SSD using the click-fix SSD adjustment tool and clip in the TRUFIX holder with your field detector.



BEAMSCAN® Speedo



BEAMSCAN® Ringo



BEAMSCAN® Mobilo

PTW Freiburg GmbH  
Lörracher Str. 7  
79115 Freiburg · Germany  
Phone +49 761 49055-0  
Fax +49 761 49055-70  
info@ptwdosimetry.com

ptwdosimetry.com

©PTW 2025. Subject to change without notice.  
D949.139.08/00 2025-07

ptwbeamscan.com

**PTW** THE  
DOSIMETRY  
COMPANY