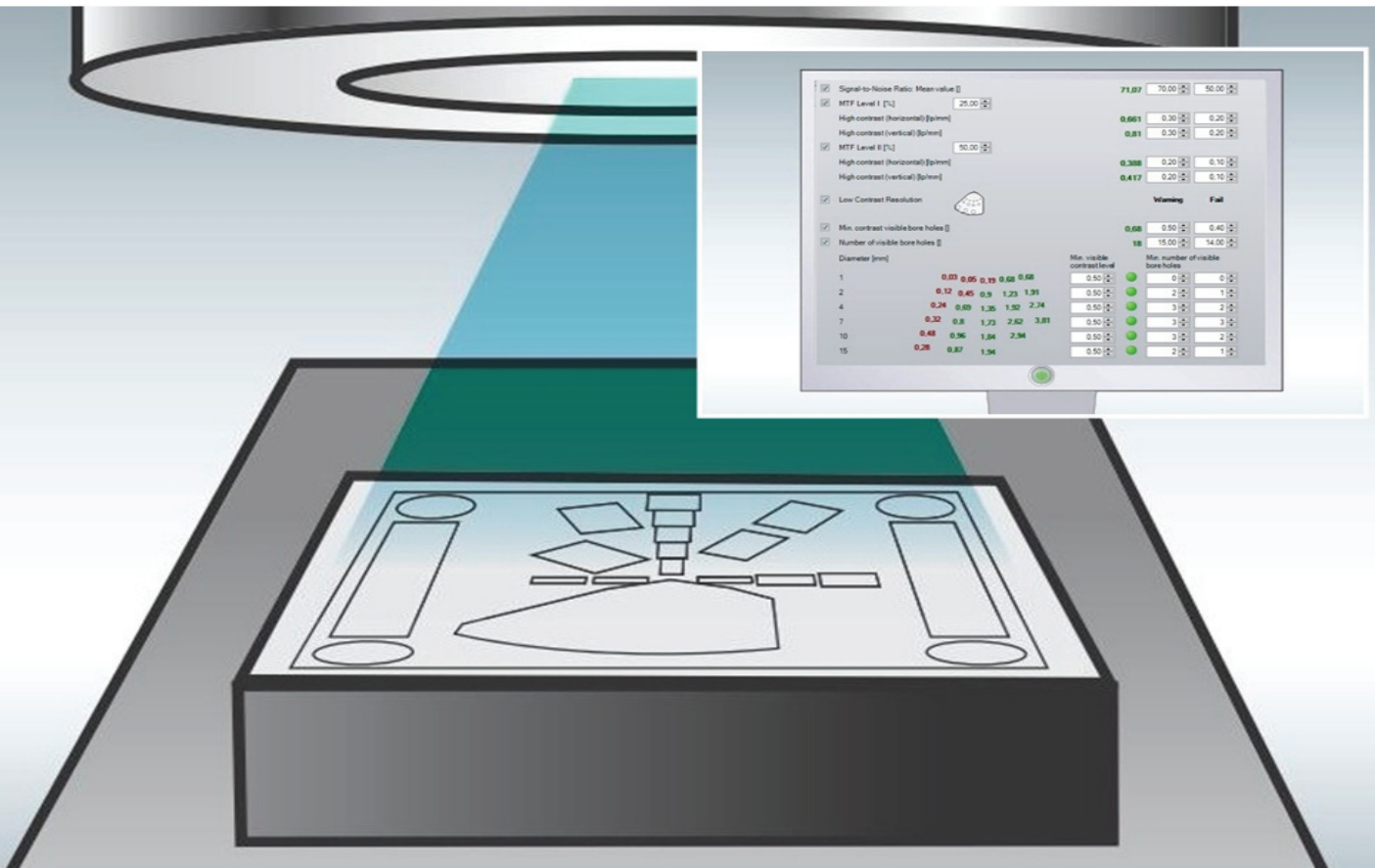


Image Quality Assessment Made Easier.

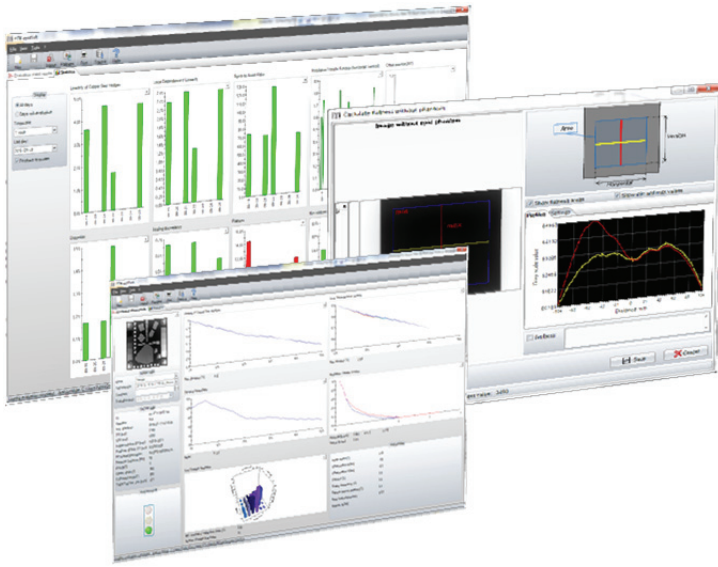


EPID QA

All tests supported
DIN 6847-6 • AAPM TG-142

Turnkey Solution for MV Imaging QA

- ▶ Acquire all image parameters with a single beam, in one image.
- ▶ Automatically assess images in a few seconds.
- ▶ Track and document results from anywhere in your network.



EPID QA

Turnkey Solution for MV Imaging QA

Highlights

- ▶ Streamlined QA – measurement, evaluation, documentation in one solution
- ▶ Complete testing – versatile phantom with multiple test patterns included
- ▶ Focal spot geometry for best spatial resolution
- ▶ Wide FOV coverage of imager
- ▶ Evaluation of flatness and artifacts without phantom
- ▶ Comprehensive statistics for trend analysis and performance monitoring
- ▶ Export to web-based Track-it QA database* for quick access to all QA data from anywhere in your network

Benefits

- ▶ Fast – quick setup, automated testing and evaluation
- ▶ Comprehensive – complete testing with one phantom
- ▶ Safe – secure user management
- ▶ Compliant – meets all DIN 6847-6, AAPM TG-142 recommendations

Fully Automatic Evaluation with epidSoft

- ▶ Signal Linearity
 - Isotropy of Signal Linearity
 - Signal-to-Noise Ratio (SNR)
 - High Contrast Resolution (MTF)
 - Low Contrast Resolution
- ▶ Image Rotation
- ▶ Image Offset to Central Axes
- ▶ Image Distortion
- ▶ Scaling Discrepancy
- ▶ Flatness (with or without phantom)
- ▶ Noise (with or without phantom)
- ▶ Artifacts (visual evaluation)

*optional

Workflow - Simple & Seamless

- ▶ Position phantom at SAD.
- ▶ For a complete phantom projection, position imager in the field of view (FOV) of the EPID.
- ▶ Expose EPID QC Phantom with a few MU. Expose a second time without phantom to check flatness or to detect artifacts.
- ▶ Export acquired image preferably using DICOM. Image is automatically registered and evaluated after import into epidSoft.
- ▶ Document test results using customized printouts.
- ▶ View trends and monitor changes in epidSoft or export results to Track-it QA database for web-based access and documentation.

Phantom Specifications

Application	EPID QA testing with (4 ... 25) MV Photons
Focus distance	100 cm
Linearity/SNR	Copper steps of (2/4.1/6.3/8.6) mm and (11.1/13.5/16.6/19.6/26.7) mm
High contrast spatial resolution	(0.5 ... 3.33) lp/mm, bidirectional, and (0.15 ... 0.33) lp/mm
Low contrast depths	(0.5/1/2/3.2/4.8) mm
Holes	∅ (1.1/2/4/7/10/15) mm
Dimensions (W x L x H)	250 mm x 250 mm x 42 mm, 9.84" x 9.84" x 1.65"
Weight	3.8 kg, 8.4 lbs

Order Information

T42025	EPID QC Phantom
S070010	epidSoft Software
S070027	Track-it QA Data Management Software
L522049	EPID QC Phantom Carrying Case