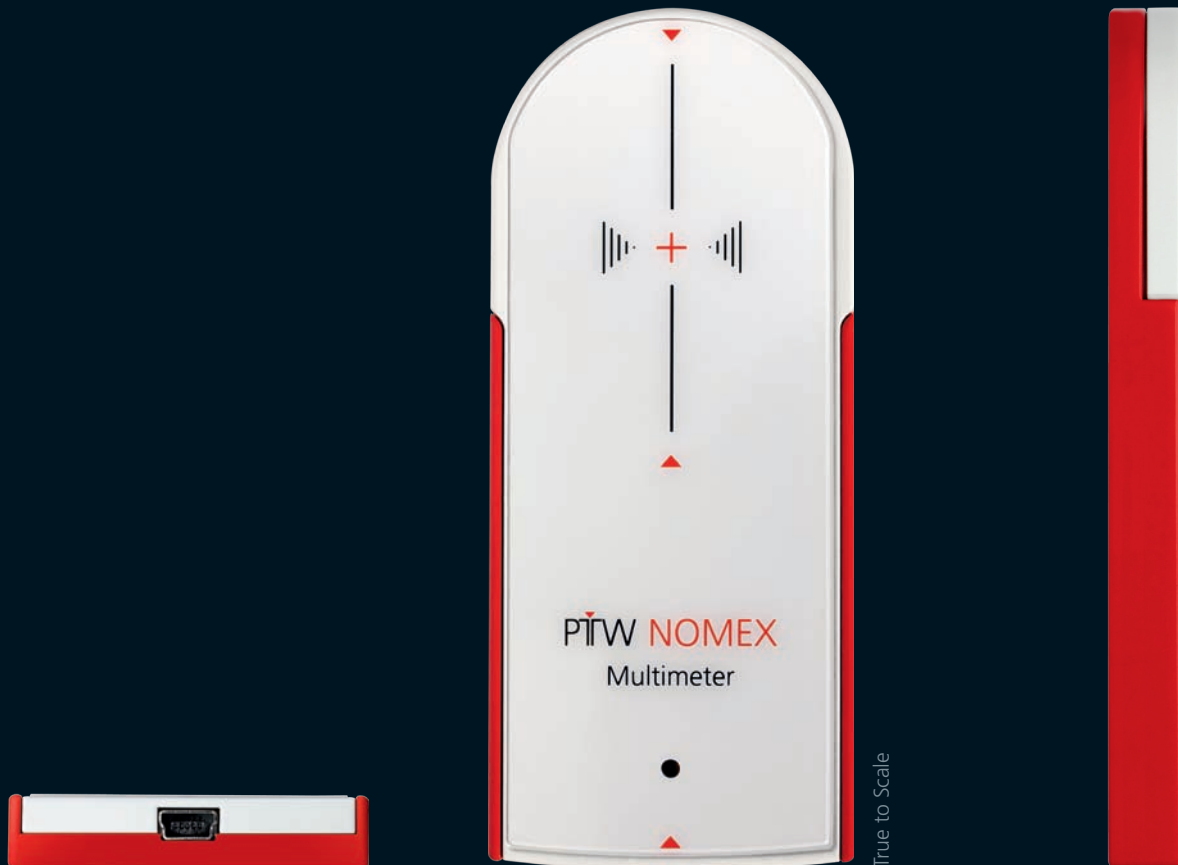


NOMEX[®] Multimeter

True Precision. PTW.



True to Scale

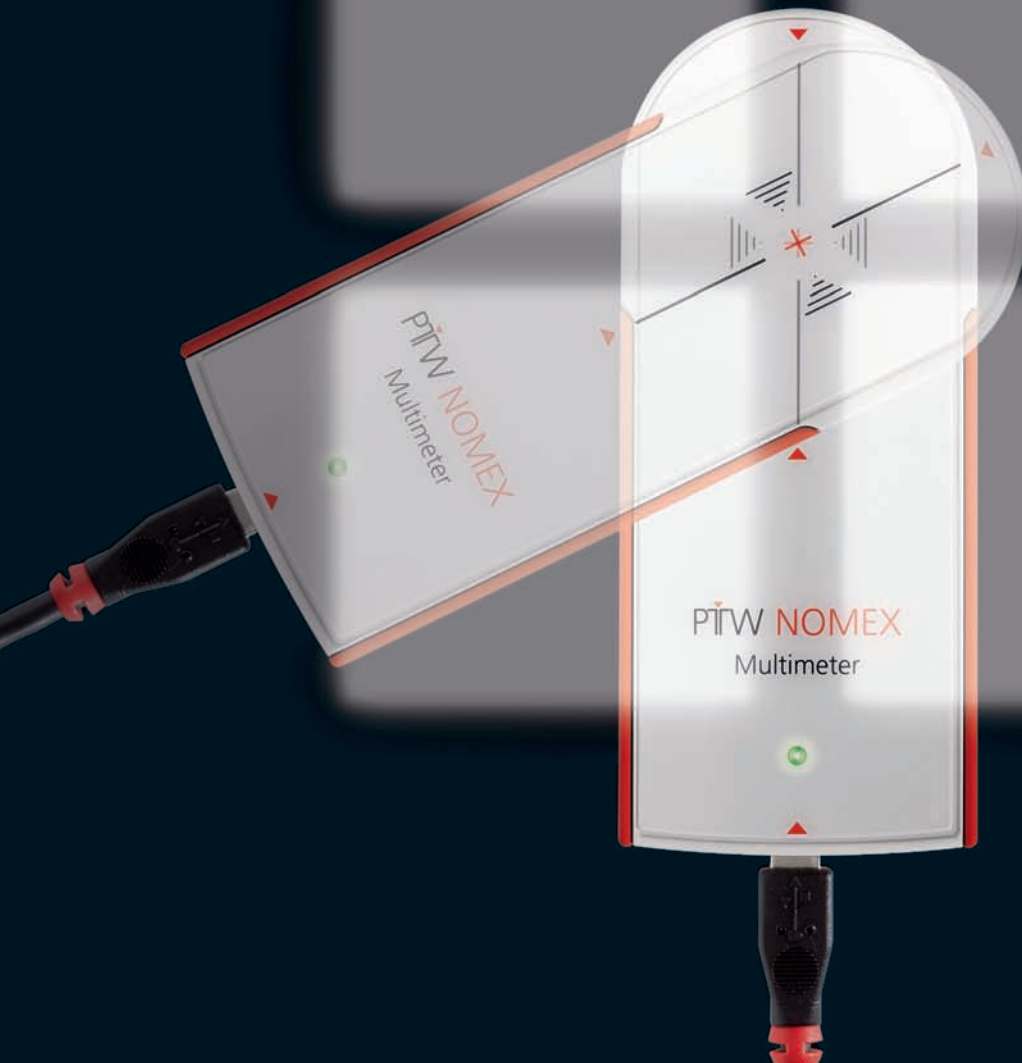
Connect ...



NOMEX[®] Multimeter

- ▶ Compact multi-parameter measuring device compliant with IEC 61674 for acceptance testing and routine quality control measurements on diagnostic X-ray units (different models available e.g. for RAD/FLU, DENT, CT, MAM, IGRT)
- ▶ Connection of the CE marked class IIb certified device to a PC via USB
- ▶ Single exposure simultaneously captures: dose, dose rate, dose per pulse, pulses, frequency, irradiation time, tube voltage, total filtration, half value layer, together with waveforms for both kV and dose rate and mAs (optionally)
- ▶ Dose and dose rate measurements at a total filtration up to 2.5 mm Cu possible
- ▶ kVpmax, kVpmean and practical peak voltage (PPV) calculation according to the algorithm of IEC 61676
- ▶ True Precision: Dose accuracy within the RAD/FLU range typically $\pm 1.5\%$, within the MAM range $\pm 2.5\%$, long term stability $\pm 1\%$ per year, dose stability for exposures up to 40 Gy $\pm 1\%$

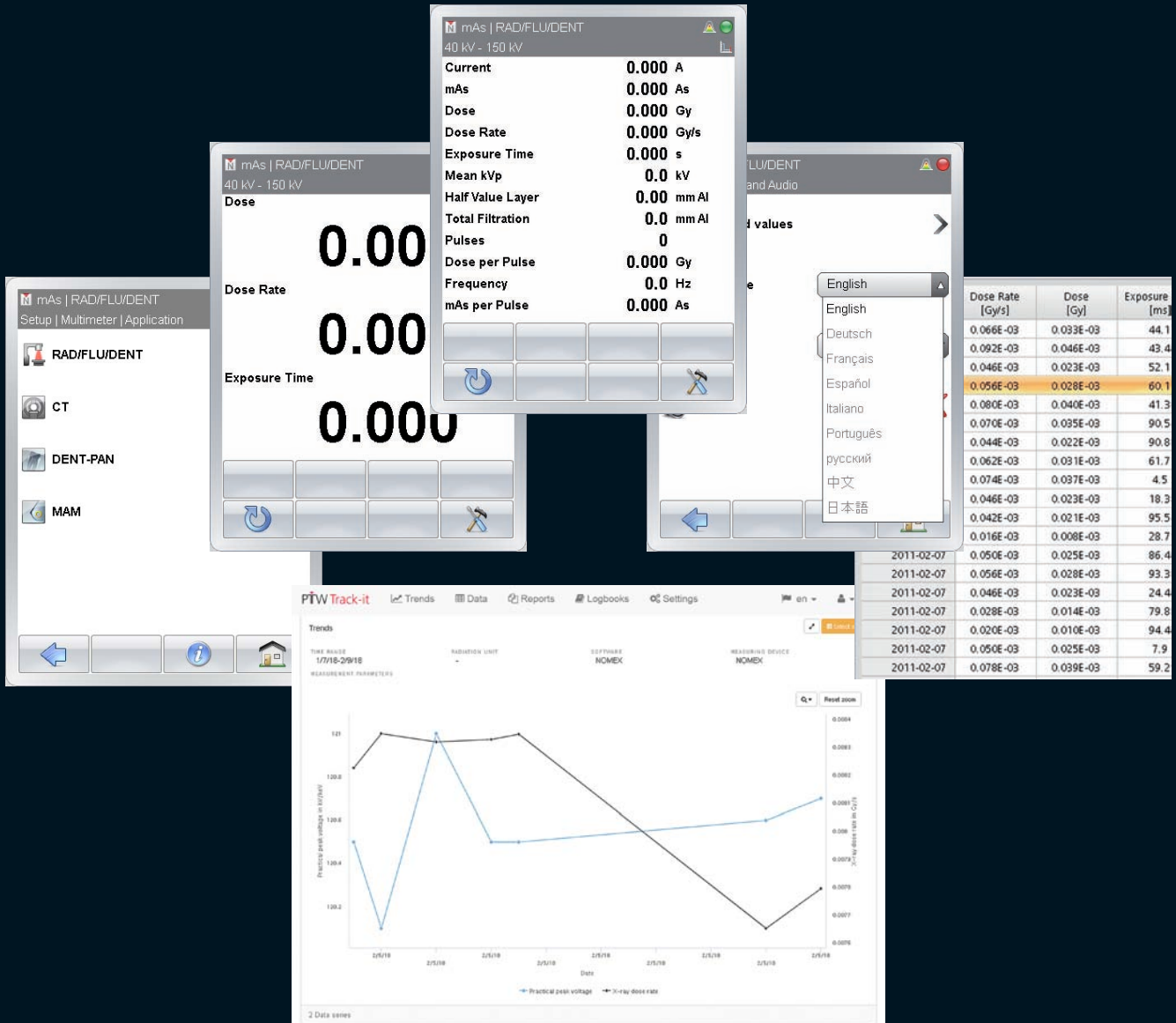
... position ...



NOMEX[®] Multimeter

- ▶ Angular independent for positioning within the beam
- ▶ Ergonomic housing avoids shifting after positioning
- ▶ Automatic start/stop and auto reset functions
- ▶ Automatic dose and kV ranging avoids double exposures
- ▶ Automatic total filtration compensation up to 55 mm Al
- ▶ Automatic HVL detection for all applications incl. MAM
- ▶ Optional mAs measurement (invasive or non-invasive)

... evaluate.



NOMEX[®] Multimeter

- ▶ Modifiable parameter displaying (view all parameters at a glance or just selected ones)
- ▶ Statistic calculations (mean value, standard deviation, coefficient of variation) by simply marking the results of interest
- ▶ Automatic data export to Track-it[®]
- ▶ Data and waveform export as XLS, XML or CSV file for subsequent data processing
- ▶ Export of measurement data directly to a connected Excel workbook possible
- ▶ Software menu available in different languages (German, English, French, Spanish, Portuguese, Italian, Russian, Chinese, Japanese)

NOMEX[®] Multimeter

Technical Data

Measuring ranges

Air kerma rate R/F/D/CT	5 µGy/s ... 500 mGy/s, $\pm 3.5\%$ (typically $\pm 1.5\%$)
Sensitivity mode	0.1 µGy/s ... 500 mGy/s (typically $\pm 5\%$)
Trigger level	min. 10 nGy/s (typically)
Air kerma R/F/D/CT	50 nGy ... 500 Gy, $\pm 3.5\%$ (typically $\pm 1.5\%$)
kV R/F/D/CT	(40 ... 150) kV, $\pm 1.5\%$ or ± 1 kV (typically $\pm 0.75\%$ or ± 0.5 kV)
Total filtration	(1.5 ... 40) mm Al, $\pm 10\%$ or ± 0.5 mm Al
HVL R/F/D/CT	(0.95 ... 13.5) mm Al, $\pm 10\%$ or ± 0.25 mm Al (typically ± 0.1 mm Al)
Air kerma rate MAM*	50 µGy/s ... 500 mGy/s, $\pm 2.5\%$
Air kerma MAM*	0.5 µGy ... 500 Gy, $\pm 2.5\%$
kV MAM*	(20 ... 49) kV **, ± 0.5 kV
HVL MAM*	(0.25 ... 0.75) mm Al, ± 0.01 mm Al
Dose per pulse	50 nGy ... 500 Gy, $\pm 3.5\%$ (typically $\pm 1.5\%$)
Pulses	0 ... 99999
Frequency	0.2 Hz ... 500 Hz
Irradiation time	1 ms ... 298 h, $\pm 0.01\%$ or ± 0.5 ms

PC interface USB V2.0 full speed

Outer dimensions 115 mm x 50 mm x 9 mm

Weight 250 g

* valid for: Mo/30µmMo, Mo/25µmRh, Mo/250µmCu, W/50µmRh, W/50µmAg, W/0.7mmAl, W/1.1mmTi, W/300µmCu, Rh/25µmRh, Rh/30µmAg, Rh/250µmCu

** depending on the radiation quality

Ordering information

[L981815] NOMEX Multimeter all-in

for measurements in R/F/D/ENT, CT, MAM. Includes NOMEX[®] Multimeter, software on CD, 2 m USB and 5 m long active extension cable, calibration certificate, user manual and transport cases. Requires connection to a PC.

Different models each with/without mAs option are available.

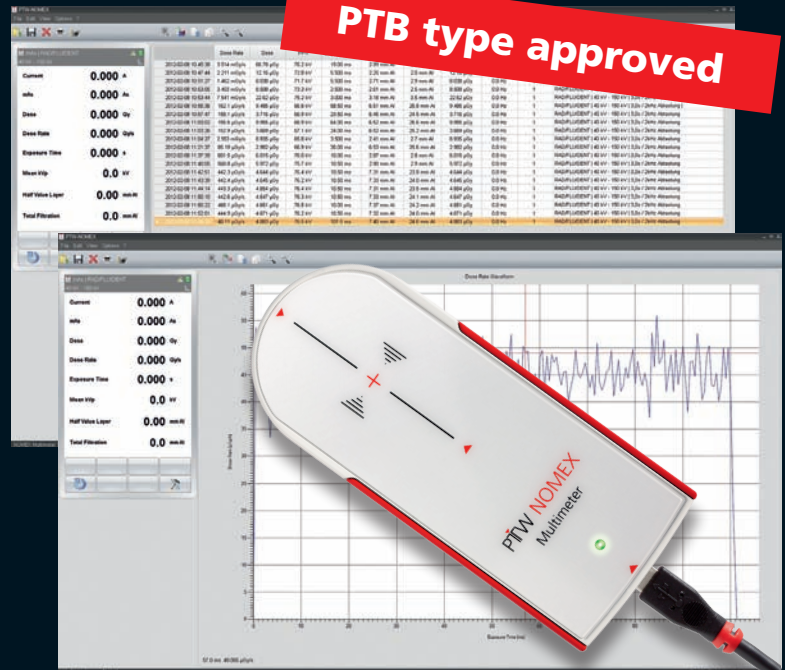
Accessories

[L981530]	NOMEX [®] mAs
[T20016]	NOMEX [®] Multimeter holder
[T20017]	NOMEX [®] cassette adapter
[E41700B,S,G]	NOMEX [®] service contract Bronze, Silver, Gold

© D909.139.00/08 Effective 2019-01. Previous specifications are void.

WWW.PTWNOMEX.COM USA | LATIN AMERICA | CHINA | ASIA PACIFIC | INDIA | UK | FRANCE | IBERIA | GERMANY

PTB type approved



PTW

Knowing what
responsibility means