

How do I set up a network communication for OCTAVIUS Detector 729

Network Configuration for OCTAVIUS Detector

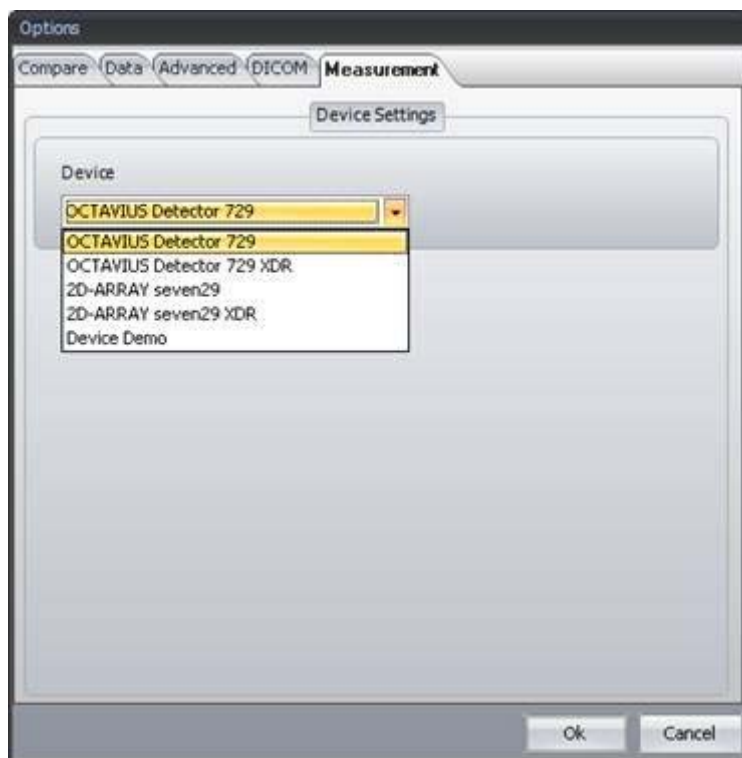
The following procedure describes how to setup the OCTAVIUS Detector for network (Ethernet) connection. This short description does not contain all potential configurations and issues, but it is a good starting point.

Prerequisites

- OCTAVIUS Detector T10040 together with Detector Interface T16039
- VeriSoft 4.2 or higher
- Network providing DHCP service (standard)

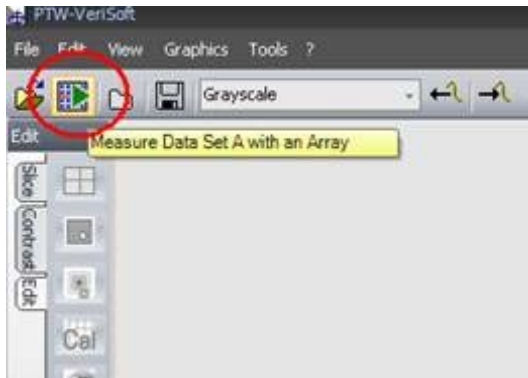
Procedure

1. Switch off the Detector Interface
2. Connect the Detector Interface to the network using a standard patch cable
3. Switch on the Detector Interface - the Detector Interface receives an IP-address from the network
4. Launch VeriSoft. Open Tools / Options / Measurement and select the correct detector:



Click on "Ok" to store this setting.

5. Start the measurement in VeriSoft (press the green arrow)

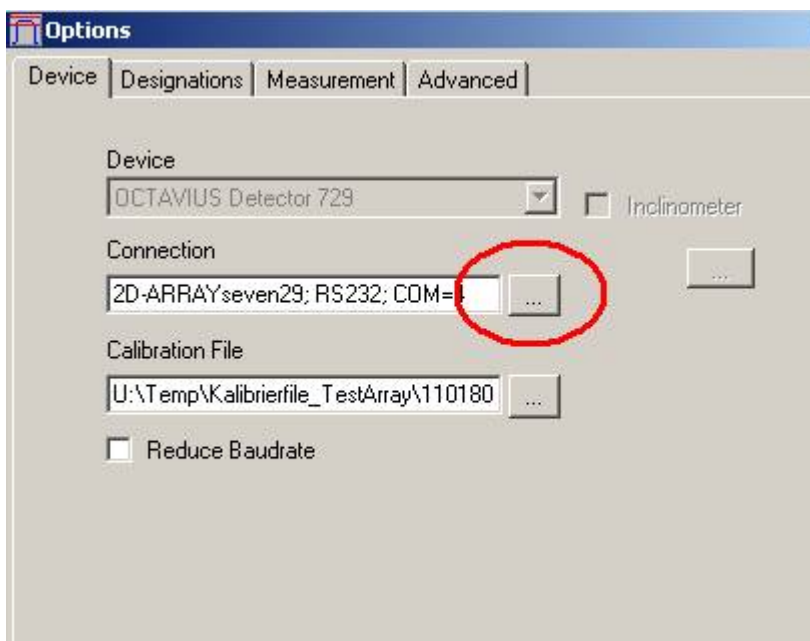


Accept the measurement parameters. Hint: the first time the communication to the array is not established, therefore it takes quite a long time until a timeout happens.



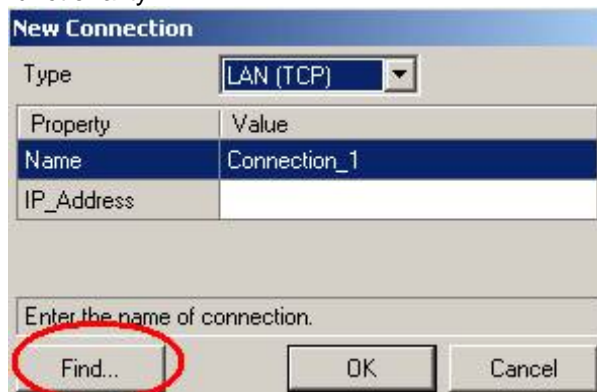
Accept this message pressing on "OK"

6. Configure the connection. Select Tools, Options, Device.



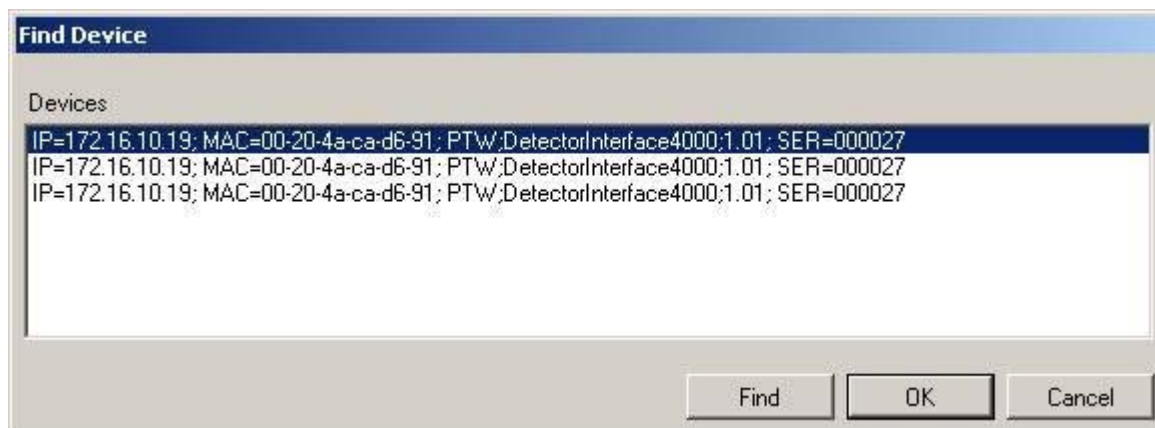
Click the field with the three points in the section "Connection".

To create the first connection, please select “new”, to change an existing one use “edit”. Select the type “LAN (TCP)”. Normally you do not know the IP-address, therefore search for it using the “Find” functionality:



The 'New Connection' dialog box has a title bar 'New Connection'. It contains a 'Type' dropdown menu set to 'LAN (TCP)'. Below it is a table with two columns: 'Property' and 'Value'. The table has two rows: 'Name' with value 'Connection_1' and 'IP_Address' with an empty field. At the bottom, there is a text input field labeled 'Enter the name of connection.' and three buttons: 'Find...' (circled in red), 'OK', and 'Cancel'.

Result should look like this:



The 'Find Device' dialog box has a title bar 'Find Device'. It contains a list box labeled 'Devices' with three entries, all identical: 'IP=172.16.10.19; MAC=00-20-4a-ca-d6-91; PTW;DetectorInterface4000;1.01; SER=000027'. The first entry is selected. At the bottom, there are three buttons: 'Find', 'OK', and 'Cancel'.

Press “OK” to accept the selection.

Caution! You could get more than one device. Check the serial number and select the correct one. If desired you may enter a name.



The 'New Connection' dialog box is shown again. The 'Type' dropdown is still 'LAN (TCP)'. The table now has 'Name' as 'Octavius' and 'IP_Address' as '172.16.10.19'. The 'Find...' button is no longer circled. The 'Enter the name of connection.' field is empty. The 'OK' button is highlighted.

Click “OK”.

If there is more than one connection, please mark the desired one and click OK:



Leave the option menu with "OK". The detector is ready for measurement.

PTW-Freiburg
 Lörracher Straße 7 • 79115 Freiburg • Germany
 Phone +49 761 49055-0 • Fax +49 761 49055-70
 info@ptw.de • www.ptw.de