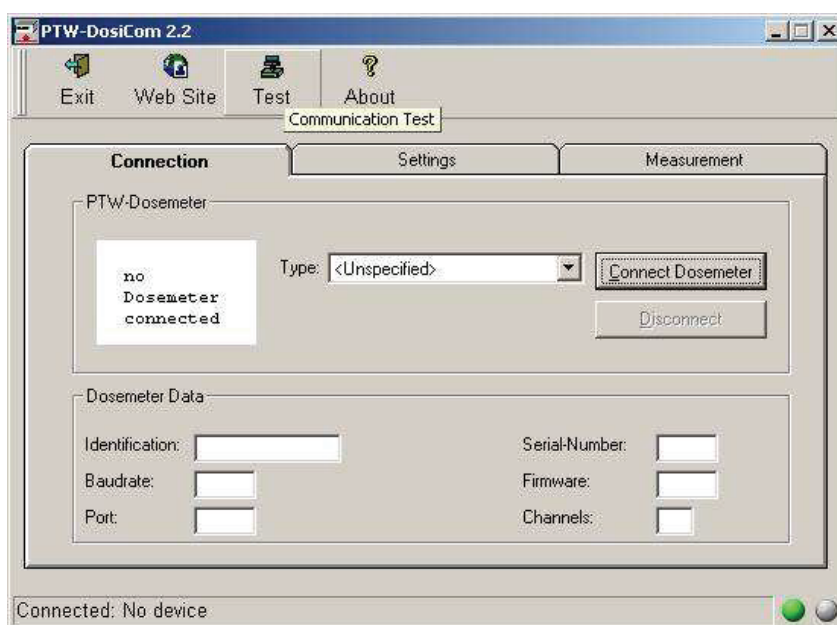


How can I check the communication between PC and 2D-ARRAY seven29

If you have problems to establish the communication between 2D-Array and measurement PC, PTW provides a powerful tool for this technical test. The tool „DosiCom“ is included in MEPHYSTO, Tools. Alternatively you can download the latest version from the internet: <http://www.ptw.de/software.html>

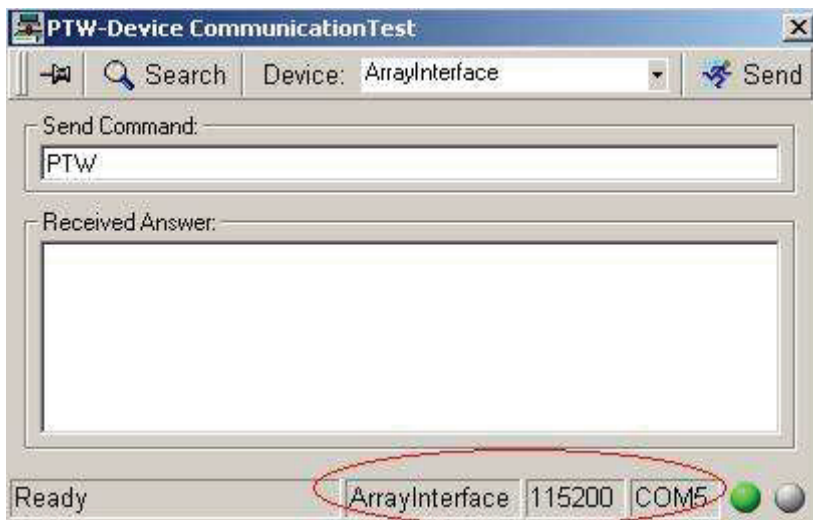
Please assemble your equipment as usual and connect your measurement PC. The Array-Interface must be switched on, serial cable must be connected. Launch DosiCom, accept the disclaimer and click „Test“:



Now click „Search“



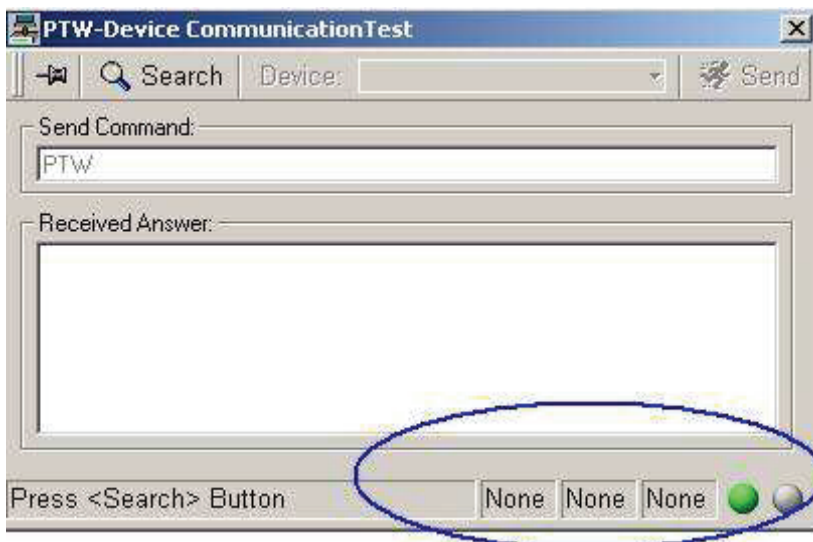
Check the result left of the green traffic light:



ArrayInterface is the interface of the 2D-Array. If you have a result similar to this screen, the technical communication is correct (no hardware problem).

Make sure you have the same serial com port indicated in DosiCom configured in your measurement software (VeriSoft, MatrixScan, MultiCheck or BeamAdjust).

If you get a screen with the result "None" (see below), there is no working connection:



Potential reasons are:

- Cable wrong or defective or plug not switched completely. You can check the serial cable - it must be 1 by 1 connected. Null-Modem cables (crossover) do not work.
- Serial port is already opened by other software. Make sure all software using serial ports are closed. Try to connect to another PC using DosiCom. If this works, you have the problem with your measurement PC only.
- If it does not work with any PC and you are sure the cable is correct, please use a short serial cable (max. 3m). If this works there is a problem with the length of your serial cable. You can check each step just pressing on „Search“ in DosiCom

PTW-Freiburg
Lörracher Straße 7 • 79115 Freiburg • Germany
Phone +49 761 49055-0 • Fax +49 761 49055-70
info@ptw.de • www.ptw.de