

User Manual

Track-it Import Client

Version 2.0 or higher

Table of Contents

Table of Contents.....	2
1 Intended Use.....	3
2 Safety Information.....	3
3 Installation.....	4
3.1 Minimum System Requirements.....	4
4 Components.....	6
4.1 Track-it Import Dialog.....	7
4.2 Track-it Import Configuration.....	7
5 Settings in the Track-it Import Configuration Software.....	8
5.1 Start.....	8
5.2 Exit.....	8
5.3 Basic Settings.....	9
5.4 Export Settings for Measuring Parameters and Limit Values.....	10
6 Settings in the Track-it Import Dialog.....	19
6.1 Measuring Parameters Tab.....	20
6.2 Properties Tab.....	21
6.3 Measurement Comments Tab.....	22

1 Intended Use

Track-it Import Client is required to be able to export data from PTW software to the Track-it database.

Track-it Import Client is supplied together with other PTW software.

Track-it Import Client includes the Track-it Import Configuration software.

2 Safety Information

CAUTION

Improper handling.

Incorrect Operation!

This document is a supplement to the user manual of the PTW software, from which you want to export data to the Track-it database. Use the document only in combination with the user manual of the PTW software.

Follow the General Information and Safety Information given in the user manual of the PTW software.

PTW-Freiburg

Physikalisch-Technische Werkstätten
Dr. Pychlau GmbH
Lörracher Straße 7
79115 Freiburg
Germany
Tel.: +49 761 49055-0
Fax: +49 761 49055-70
info@ptw.de
www.ptw.de

3 Installation

You will find the installation program of the Track-it Import Client on the installation CD/DVD of the software, from which you want to export data to the Track-it database.

Install the Track-it Import Client as described in section "Installation" in the user manual of the appropriate software.

3.1 Minimum System Requirements

Operating systems:	Windows 7 Professional x32/x64 Windows 8 / 8.1 Pro x32/x64 Windows 10 Pro x32/x64 The most recent service packs and updates must be installed. For a complete list of all operating systems approved for this software, please refer to the Release Notes on the installation CD/DVD.
.NET Framework	.NET Framework 4.5.1 or higher (automatic installation during setup) The required .NET Framework versions will be installed only if they have not yet been installed.
Processor:	min. Pentium IV processor, 2 GHz or compatible processor recommended multi-core processor, 2.3 GHz or better
RAM:	min. 2 GB RAM recommended 4 GB

-
- Hard disk: min. 100 MB of free space for
Track-it Import Client and
min. 2 GB of free space for
.NET Framework 4.5.1
- Graphics: XGA (1024 x 768 pixels)
or higher resolution
recommended SXGA
(1280 x 1024 pixels)
default font size enabled
- Software: PDF viewer program

4 Components

The Track-it Import Client software includes the following components:

- *Track-it Import* dialog:
definition of the measuring parameters and properties to be exported
- Track-it Import Configuration software:
preconfiguration of the Track-it Import Client and the measuring parameters

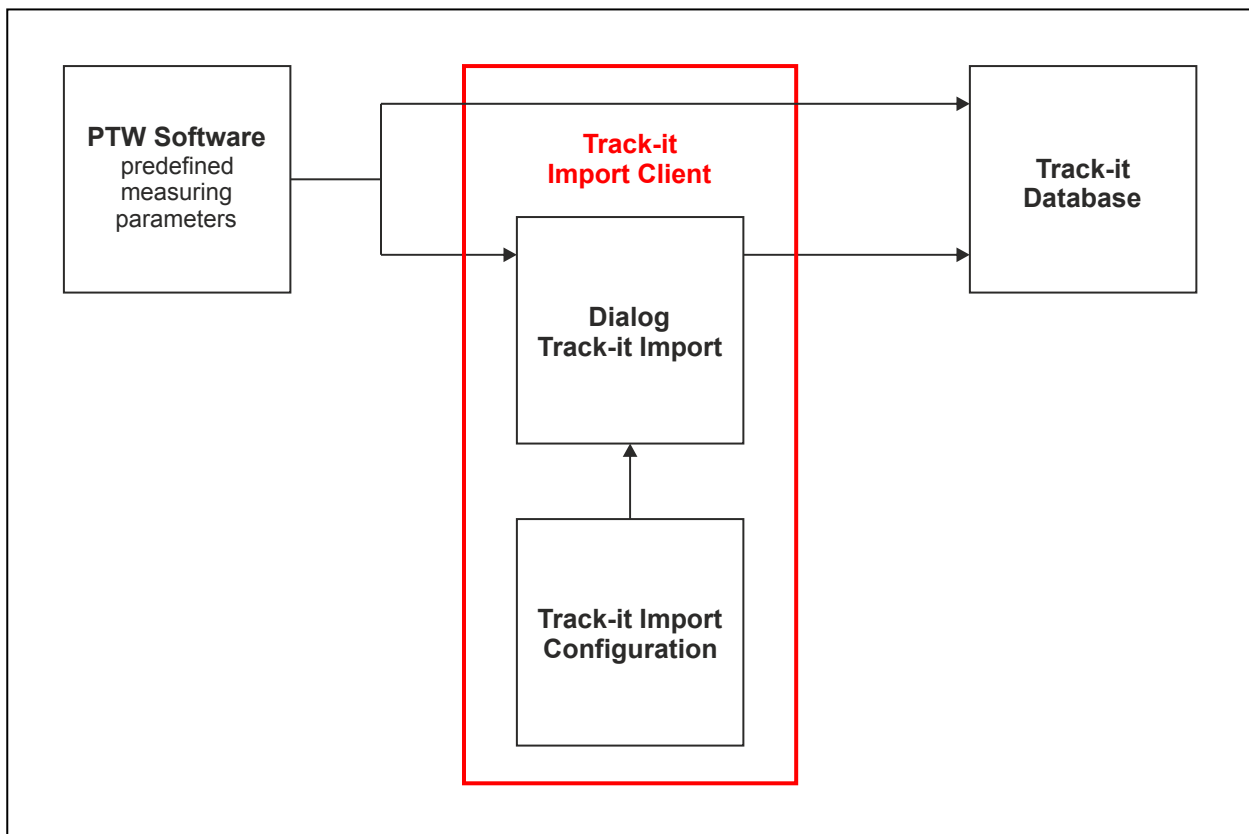


Figure 1: Relationship between the components

4.1 Track-it Import Dialog

The Track-it Import dialog is used to define the measuring parameters to be exported to the Track-it database.

User-defined measuring parameters can additionally be entered.

The Track-it Import dialog is displayed only if defined in the Track-it Import Configuration software.

4.2 Track-it Import Configuration

Track-it Import Configuration is a software that allows you to configure the following user-defined settings for data export to the Track-it database.

Basic Settings

- Configuration of the link to the Track-it server application
- Setting the user interface language

Export Settings for Measuring Parameters and Limit Values

Each PTW software requires and manages different measuring parameters. This means that, by default, different measuring parameters are exported to the Track-it database in each case.

These are your options in the Track-it Import Configuration software:

- Selection of additionally required measuring parameters
- Deselection of measuring parameters that are not required
- Creation and management of additional, user-defined measuring parameters

A PTW software that manages limit values does not export the limit values to the Track-it database by default.

The Track-it Import Configuration allows you to define the PTW software whose limit values you also want to transfer.

Track-it uses these limit values, e. g., for display of the trend curves.


5 Settings in the Track-it Import Configuration Software

5.1 Start

- Click the Windows *Start* button
 - *Programs*
 - *PTW*
 - *Tools*
 - *Track-it Import*
 - *Track-it Import Configuration* icon.
- The *Track-it Import Configuration* main screen (refer to [Figure 2](#)) will be displayed.
- Alternatively, you can start Track-it Import Configuration using the MEPHYSTO Navigator.

5.2 Exit

Choose one of the following procedures to exit Track-it Import Configuration:

- Select menu *File* → *Exit*.
- Press the key combination *Alt+F4*.
- Double-click the program icon in the title bar of the main screen.
- Click the Windows button  in the title bar of the main screen.

5.3 Basic Settings

5.3.1 Settings for Data Export to the Track-it Database

The *Track-it Import Configuration* main screen will be displayed:

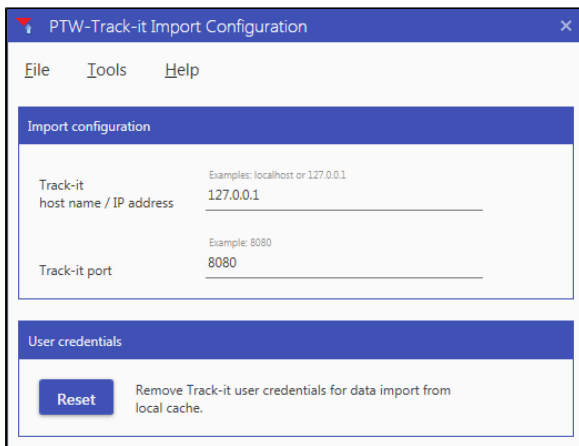


Figure 2: *Track-it Import Configuration* main screen

- Enter the IP address or the hostname and the port number of the Track-it server application in the respective input boxes.

Example:

Both the Track-it server application and the software, from which you want to export data to the Track-it database, are on the same PC and the port number is 8080.

In this case, the inputs are:

127.0.0.1 and *8080*

- Save the settings by selecting menu *File* → *Save*.

5.3.2 Resetting Track-it User Data

After the export of data, the Track-it login information (user name and password) remain stored for a period of time that can be configured in Track-it. This allows you to continue exporting data without logging in again.

- To reset the Track-it user data, click the *Reset* button in the *User credentials* pane.

→ For the next export of data to the Track-it database, the user is required to log in again to Track-it.

5.3.3 Selecting the Language

The Track-it Import Configuration screen can be viewed in English and in German.

- Change the language by selecting menu *Options* → *Change language*.
- Save the new language by selecting menu *File* → *Save*.

5.4 Export Settings for Measuring Parameters and Limit Values

5.4.1 Measuring Parameter Settings

Each PTW software requires and manages different measuring parameters. This means that, by default, different measuring parameters are exported to the Track-it database in each case.

These are your options in the Track-it Import Configuration software:

- Selection of additionally required measuring parameters
- Deselection of measuring parameters that are not required
- Creation and management of additional, user-defined measuring parameters

- Select menu *Tools* → *Options*.

→ The *Options* dialog - *Measuring Parameters* tab will be displayed:

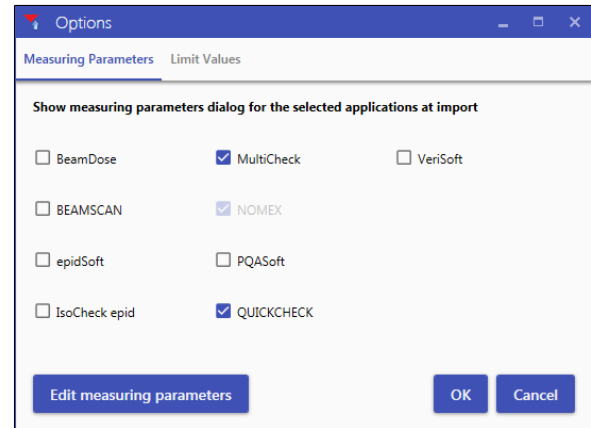


Figure 3: *Options* dialog - *Measuring Parameters* tab

In this dialog, define the PTW software to offer edit options for measuring parameters and properties before they are transferred to the Track-it database.

- Select the appropriate check boxes.
- Confirm the settings with *OK*.

→ The *Options* dialog will close and the *Track-it Import Configuration* main screen will be displayed.

- Save all settings with menu *File* → *Save*.

→ For the selected PTW software, the *Track-it Import* dialog for editing of measuring parameters and properties will be displayed before they are exported to the Track-it database. For further information, refer to section 6 "[Settings in the Track-it Import Dialog](#)".

Furthermore, you can edit the measuring parameters of the selected PTW software and add further measuring parameters and units.

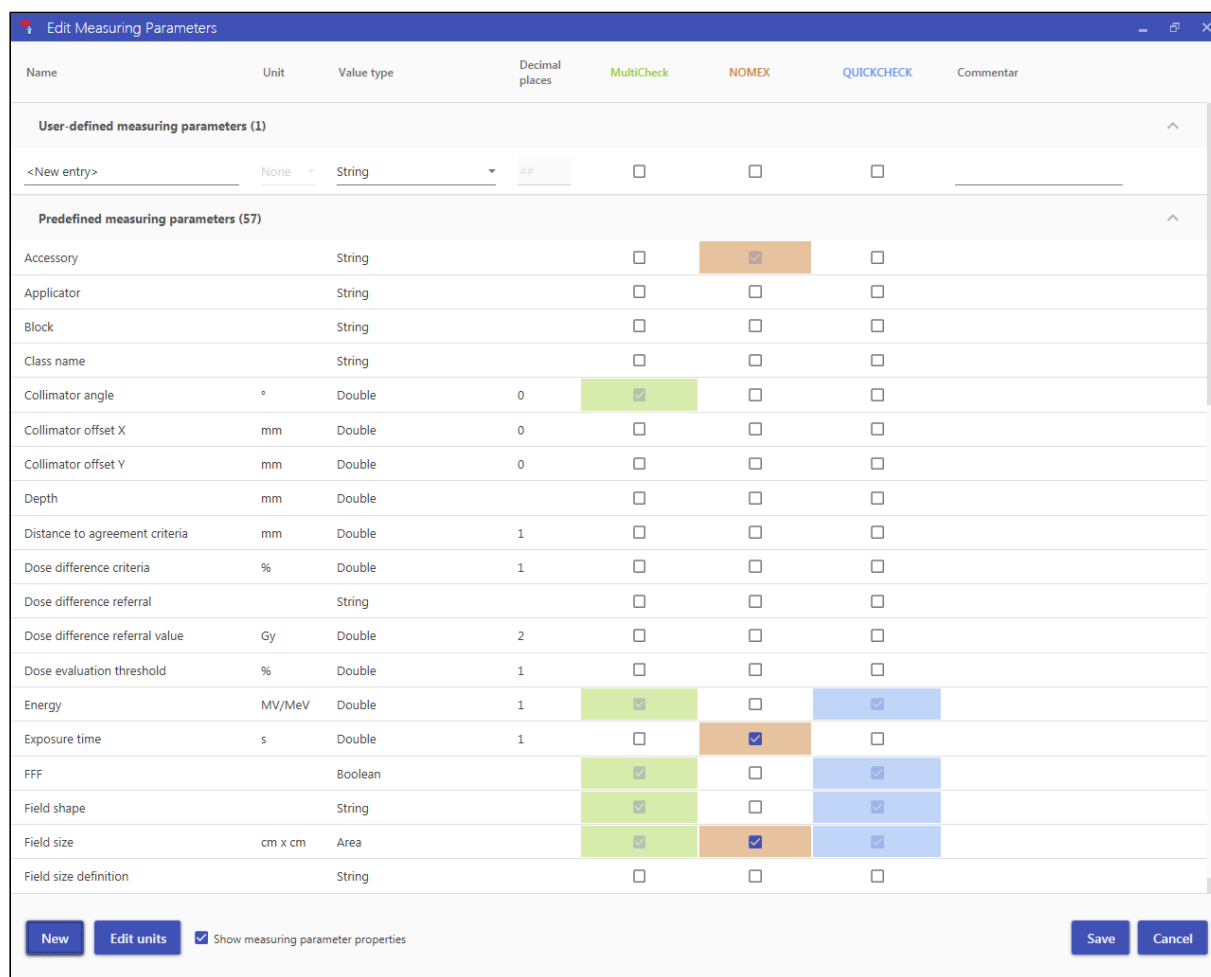
- To do so, click the *Edit measuring parameters* button.
- The *Edit Measuring Parameters* dialog will be displayed.

For further information, refer to section [5.4.2 "Editing the Measuring Parameters"](#).

5.4.2 Editing the Measuring Parameters

- To edit the measuring parameters, in the *Measuring Parameters* dialog click the *Edit measuring parameters* button.

→ The *Edit Measuring Parameters* dialog will be displayed.



Name	Unit	Value type	Decimal places	MultiCheck	NOMEX	QUICKCHECK	Commentar
User-defined measuring parameters (1)							
<New entry>	None	String	##	<input type="checkbox"/>	<input type="checkbox"/>	<input type="checkbox"/>	
Predefined measuring parameters (57)							
Accessory		String		<input type="checkbox"/>	<input checked="" type="checkbox"/>	<input type="checkbox"/>	
Applicator		String		<input type="checkbox"/>	<input type="checkbox"/>	<input type="checkbox"/>	
Block		String		<input type="checkbox"/>	<input type="checkbox"/>	<input type="checkbox"/>	
Class name		String		<input type="checkbox"/>	<input type="checkbox"/>	<input type="checkbox"/>	
Collimator angle	°	Double	0	<input checked="" type="checkbox"/>	<input type="checkbox"/>	<input type="checkbox"/>	
Collimator offset X	mm	Double	0	<input type="checkbox"/>	<input type="checkbox"/>	<input type="checkbox"/>	
Collimator offset Y	mm	Double	0	<input type="checkbox"/>	<input type="checkbox"/>	<input type="checkbox"/>	
Depth	mm	Double		<input type="checkbox"/>	<input type="checkbox"/>	<input type="checkbox"/>	
Distance to agreement criteria	mm	Double	1	<input type="checkbox"/>	<input type="checkbox"/>	<input type="checkbox"/>	
Dose difference criteria	%	Double	1	<input type="checkbox"/>	<input type="checkbox"/>	<input type="checkbox"/>	
Dose difference referral		String		<input type="checkbox"/>	<input type="checkbox"/>	<input type="checkbox"/>	
Dose difference referral value	Gy	Double	2	<input type="checkbox"/>	<input type="checkbox"/>	<input type="checkbox"/>	
Dose evaluation threshold	%	Double	1	<input type="checkbox"/>	<input type="checkbox"/>	<input type="checkbox"/>	
Energy	MV/MeV	Double	1	<input checked="" type="checkbox"/>	<input type="checkbox"/>	<input checked="" type="checkbox"/>	
Exposure time	s	Double	1	<input type="checkbox"/>	<input checked="" type="checkbox"/>	<input type="checkbox"/>	
FFF		Boolean		<input checked="" type="checkbox"/>	<input type="checkbox"/>	<input checked="" type="checkbox"/>	
Field shape		String		<input checked="" type="checkbox"/>	<input type="checkbox"/>	<input checked="" type="checkbox"/>	
Field size	cm x cm	Area		<input checked="" type="checkbox"/>	<input checked="" type="checkbox"/>	<input checked="" type="checkbox"/>	
Field size definition		String		<input type="checkbox"/>	<input type="checkbox"/>	<input type="checkbox"/>	

☒ Show measuring parameter properties

Figure 4: *Edit Measuring Parameters* dialog

5.4.2.1 Assigning Measuring Parameters to the PTW Software

For each PTW software activated in the *Options* dialog on the *Measuring Parameters* tab (refer to section 5.4.1 "Measuring Parameter Settings", one column will be displayed in the *Edit Measuring Parameters* dialog. Each PTW software will be displayed with a different color.

For a measuring parameter to be exported, it must be assigned to the PTW software. This is done by selecting the check box in the column of the appropriate PTW software. When exported to the Track-it database, a selected measuring parameter will be displayed in the *Track-it Import* dialog.

The measuring parameters exported from a PTW software by default are displayed in a colored field and the corresponding check boxes are selected.

- If dimmed, selected check boxes cannot be deactivated.
- If not dimmed, selected check boxes (e. g., the measuring parameter *Exposure time* for NOMEX), can be deactivated. In the *Track-it Import* dialog, the corresponding check boxes will also be deactivated.

Reset to Defaults

- To reset a particular PTW software to the default settings, click its name in the column header.
- After confirmation of the prompt, the default settings of the PTW software will be restored.

5.4.2.2 Predefined Measuring Parameters

PTW has predefined a set of measuring parameters; this set includes all measuring parameters that are provided by a PTW software and are typically required. These measuring parameters are displayed in the *Predefined measuring parameters* pane.

By default, only the *Predefined measuring parameters* pane is shown.

It is not possible to edit or delete predefined measuring parameters. It is not possible to enter a comment for a predefined measuring parameter.

By clicking the headline, you can show and hide the full list of predefined measuring parameters.

5.4.2.3 User-Defined Measuring Parameters

In the *Edit Measuring Parameters* dialog, you can create and manage user-defined measuring parameters.

The user-defined measuring parameters will be displayed in the *User-defined measuring parameters* pane. This pane will be added when creating the first user-configured measuring parameter.

By clicking the headline, you can show and hide the list of user-defined measuring parameters.

Adding a Measuring Parameter

- Click the *New* button.
- In the *User-defined measuring parameters* pane, a blank line will be added.
- Enter the name of the measuring parameter and define its properties.

For this, observe the following rules:

- Text fields:
In the text fields, you can enter any desired texts, e.g., the name of the measuring parameter.
- List boxes:
List boxes offer a number of options from which you can choose. It is not possible to enter free text.
- Select the check box in the column of the PTW software that is to export this measuring parameter.

HINT

User-defined measuring parameters are identified with an asterisk "*" in the *Track-it Import* dialog and in Track-it.

Editing Measuring Parameters

- Change the name or the properties of the measuring parameter.
- Select or clear the check box in the column of the PTW software concerned.

Deleting Measuring Parameters

- In the *User-defined measuring parameters* pane, click the row of the parameter to delete and remove the row with the *Del* key.

Be careful not to click a text field. In this case, the *Del* key would only delete the text in the text field.

5.4.2.4 Properties of the Measuring Parameters

By default, the following properties are displayed for each measuring parameter:

- Unit
- Value type
- Decimal places

You can show and hide the columns with the properties of the measuring parameters by selecting or clearing the *Show measuring parameter properties* check box.

5.4.2.5 Saving the Measuring Parameter Settings

- Save all settings by clicking the *Save* button.
- The *Edit Measuring Parameters* dialog will be closed and the *Options* dialog will be displayed.
- The settings will be saved.

5.4.3 Editing the Units

- To edit the units in the *Edit Measuring Parameters* dialog, click the *Edit units* button.

→ The *Edit Units* dialog will be displayed.

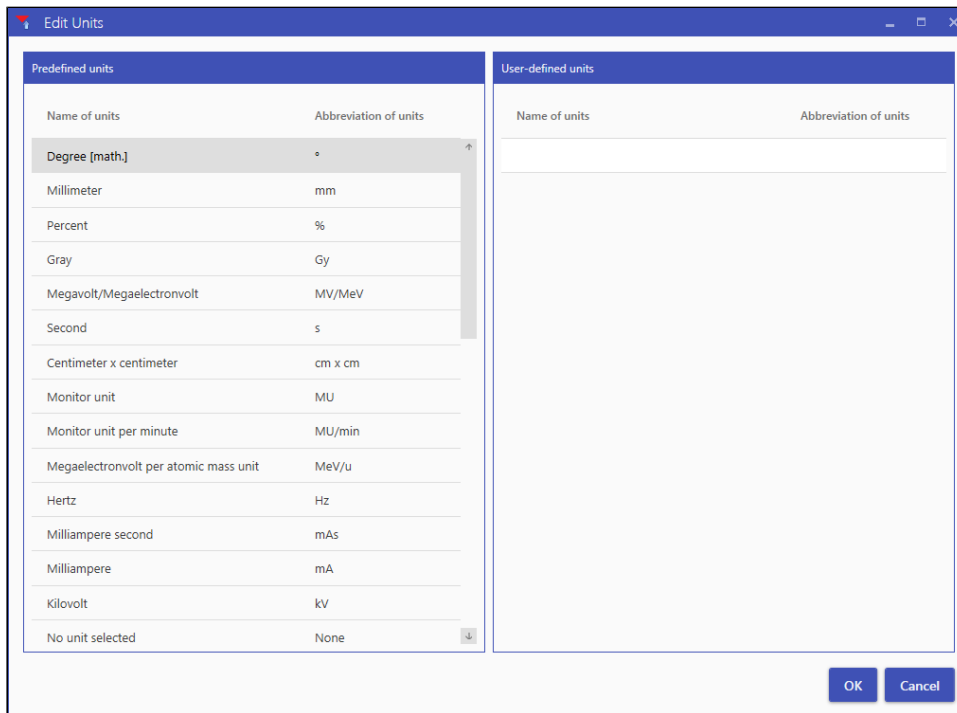


Figure 5: *Edit Units* dialog

It is not possible to edit or delete the units in the *Predefined units* pane.

In the *User-defined units* pane, user-defined units can be added, and added units can be edited and deleted.

Changing the Order of the Units

You can sort the units in both panes by one of the columns.

- For this, click the header of the column concerned.

5.4.3.1 User-Defined Units

Adding a Unit

HINT
The name and the abbreviation of a unit must be unique.

- In the *User-defined units* pane, click the input field in the *Name of units* column and enter the desired name.
 - In the input field in the *Abbreviation of units* column, enter the desired abbreviation.
 - Confirm the input with the *Tab* key or with the *Enter* key.
- A new line will be added for the next unit.
- Add more units if needed.

Inputs that do not meet the requirements will not be saved. A red frame identifies the input fields. When moving the mouse cursor over the input fields, an appropriate message will be displayed.

Editing a Unit

- Click the name or the abbreviation to edit.
- Modify the name or the abbreviation.

Deleting a Unit

- Click the row to delete.
- Delete the row with the *Del* key.

5.4.3.2 Saving the Unit Settings

- Confirm all settings with *OK*.
- The *Edit Units* dialog will be closed and the *Edit Measuring Parameters* dialog will be displayed.
- Close the *Edit Measuring Parameters* dialog by clicking the *Save* button.
- The *Edit Measuring Parameters* dialog will be closed and the *Options* dialog will be displayed.
- The settings will be saved.

5.4.4 Limit Value Settings

A PTW software that manages limit values does not export the limit values to the Track-it database by default.

In the following dialog, you can define the PTW software that will also transfer the limit values.

If exported limit values are available in Track-it, these limit values will, e. g., be used for display of the trend curves.

- Select menu *Tools* → *Options*.
- The *Options* dialog - *Measuring Parameters* tab will be displayed.
- Click the *Limit Values* tab.
- The *Options* dialog - *Limit Values* tab will be displayed:

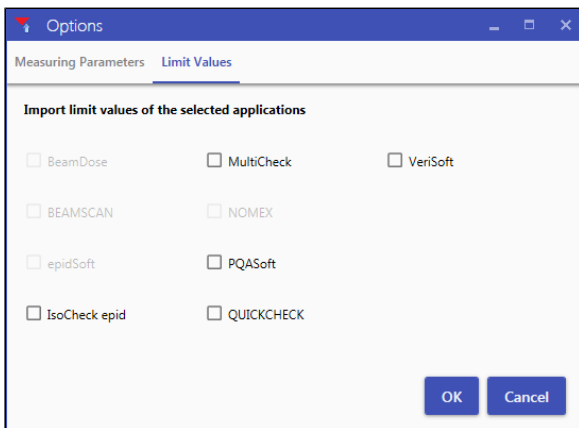


Figure 6: Options dialog - Limit Values tab

HINT

No limit values are available for a dimmed PTW software.

- Select the check box of each PTW software whose limit values you want to export to the Track-it database.
- Confirm the settings with *OK*.
- The *Options* dialog will close and the *Track-it Import Configuration* main screen will be displayed.
- Save all settings with menu *File* → *Save*.

6 Settings in the Track-it Import Dialog

If a PTW software is capable of exporting data to the Track-it database, this is done with the *Export to Track-it* function. After activation of the check box for the appropriate PTW software in the Track-it Import Configuration (refer to section 5.4.1), the *Track-it Import* dialog will be displayed (refer to Figure 7).

The *Track-it Import* dialog consists of the following three tabs:

- *Measuring Parameters*:
list of measuring parameters to import
- *Properties*:
radiation unit, software, and measuring device
- *Measurement Comments*:
comment for **all** measurements to import and list of the files to be added to the comment

All tabs show the number of measurements loaded for import. If the export of limit values has also been activated (refer to section 5.4.4 "Limit Value Settings"), the number of limit values is also indicated.

- Modifications performed in the *Track-it Import* dialog can be canceled by clicking the *Discard changes* button.

→ All three tabs will be reset to the initial state.

When the content of all measuring parameters and properties is valid, the *Track-it* button becomes active and the measurements can be imported to the Track-it database.

Otherwise, the following warning symbol will be displayed on the tab concerned.



- Start the import to the Track-it database by clicking the *Track-it* button.

or

- Abort the import operation by clicking the *Cancel* button.

→ The logging window with the appropriate messages will be displayed.

→ Changes performed in the *Track-it Import* dialog will be saved after the import. For the next import, the stored values will be preset again.

6.1 Measuring Parameters Tab

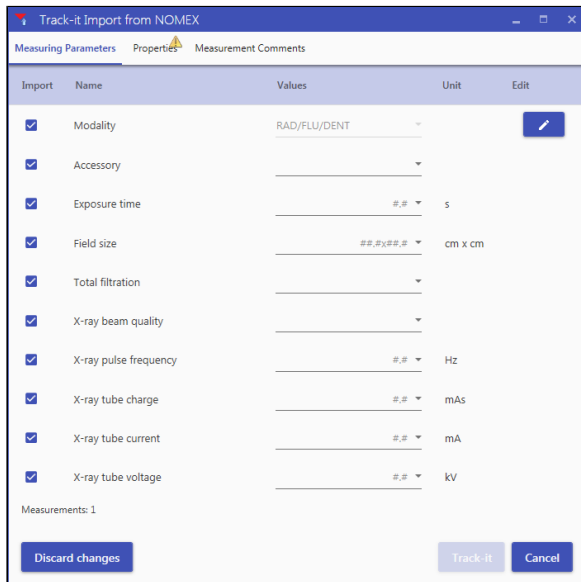




Figure 7: Track-it Import dialog - Measuring Parameters tab (example: NOMEX)

This tab lists all measuring parameters to import that you selected in the Track-it Import Configuration in the *Edit Measuring Parameters* dialog (refer to [Figure 4](#)).

By default, all measuring parameters are selected.

If the measurements to import include the measuring parameters, the values will be displayed. If multiple values are included, the label *<multiple>* will be displayed. On mouse-over, a tool tip showing the values will be displayed.

Editing the Measuring Parameters Before Import

- Deselect measuring parameters not to be imported by clearing the corresponding check box.
- For measuring parameters without values, enter the desired values.
 - Enter the value and confirm the input with the *Tab* key or with the *Enter* key. The entered value will be saved.
 - If multiple values are available, they will be displayed in the form of a list box. Select the desired value from the list box.
 - To delete a value from the list box, select the value and remove it with the *Del* key. Confirm the deletion with the *Tab* key or with the *Enter* key.
 - If the entered value is invalid, the corresponding input field will be marked red and an appropriate error message will be displayed.
- Measuring parameters of the measurements to import can be edited by clicking the appropriate *Edit* button. 
- An appropriate message will be displayed and the *Edit* button will be replaced by the warning symbol. 

6.2 Properties Tab

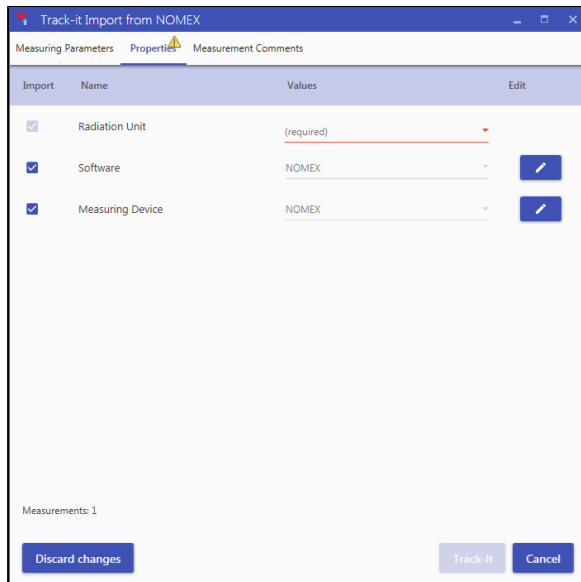


Figure 8: Track-it Import dialog - Properties tab (example: NOMEX)

This tab lists the following properties of the measurements to import:

- Radiation unit
- Software
- Measuring device

By default, all properties are selected.

If the measurements to import include the properties, the values will be displayed. If multiple values are included, the label *<multiple>* will be displayed. On mouse-over, a tool tip showing the values will be displayed.

Editing the Properties Before Import

- Deselect properties not to be imported by clearing the corresponding check box.

HINT

The *Radiation Unit* property is mandatory for the import and cannot be deselected.

- Properties can be edited by clicking the appropriate *Edit* button.



- An appropriate message will be displayed and the *Edit* button will be replaced by the warning symbol.



6.3 Measurement Comments Tab

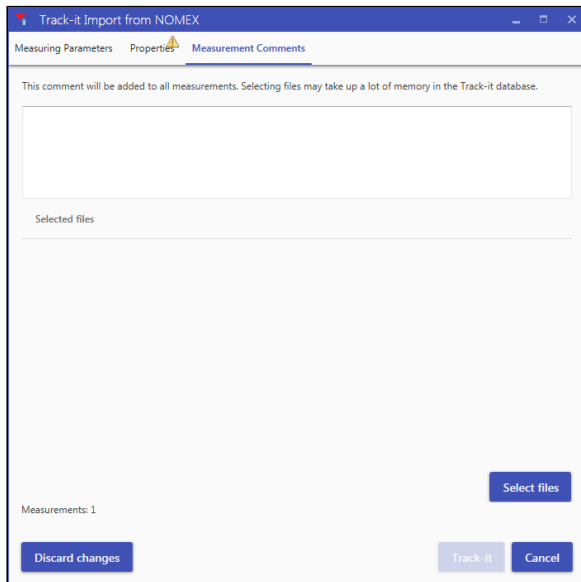


Figure 9: Track-it Import dialog - Measurement Comments tab (example: NOMEX)

A comment can be entered on this tab. This comment will be added to each imported measurement.

Furthermore, you can load files that will also be added to each imported measurement.

- Click the *Select files* button.
- In the standard Open dialog, select the desired files.